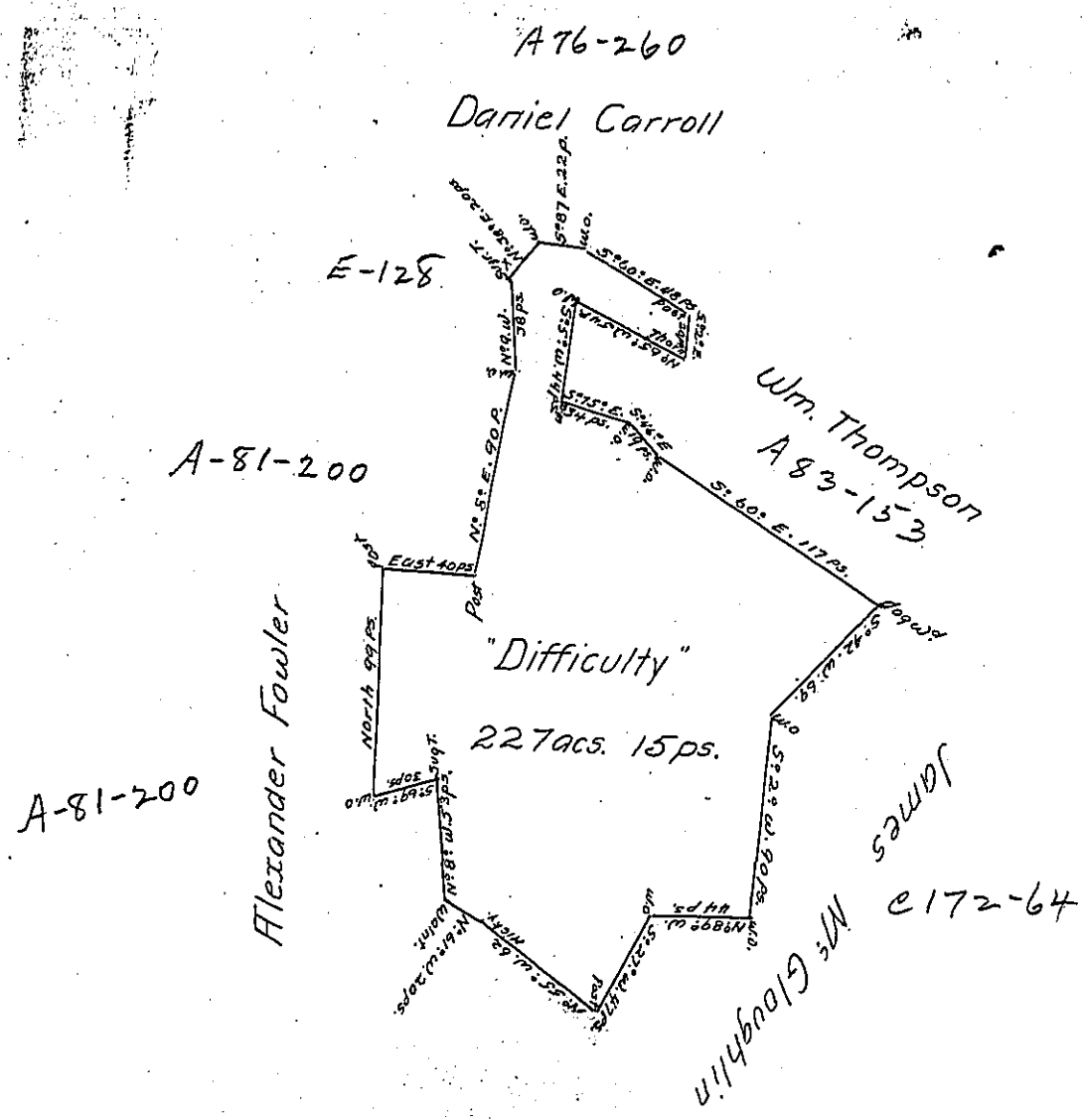


61
 P-18-216
 25
 1902



A Draught of a Survey called "Difficulty" situate on the waters of Chartiers Ck. in Washington County containing 227acs. 15ps. strict measure executed Novem^r 11th 1786 in Consequence of a Certiff. for 400acs. granted to Cornelius Conner by the Commiss^{rs} appointed by Virg^a to adjust the Claims to unpatented Lands in the Counties Monong^a Yohg^a & Ohio and duly entered with the County Sur^r.

Entry dat^d 8th. March 1780 Presley Nevill }
 Retd. 20th. Febr^y 1788 Mathw. Ritchie } Dfs.
 Jno. Lukens Esqr. S. Genl.

IN TESTIMONY that the above is a copy of the original remaining on file in the Department of Internal Affairs of Pennsylvania, made conformably to an Act of Assembly approved the 16th day of February, 1833, I have hereunto set my Hand and caused the Seal of said Department to be affixed at Harrisburg, this first day of September 1904

George R. ...
 Secretary of Internal Affairs.